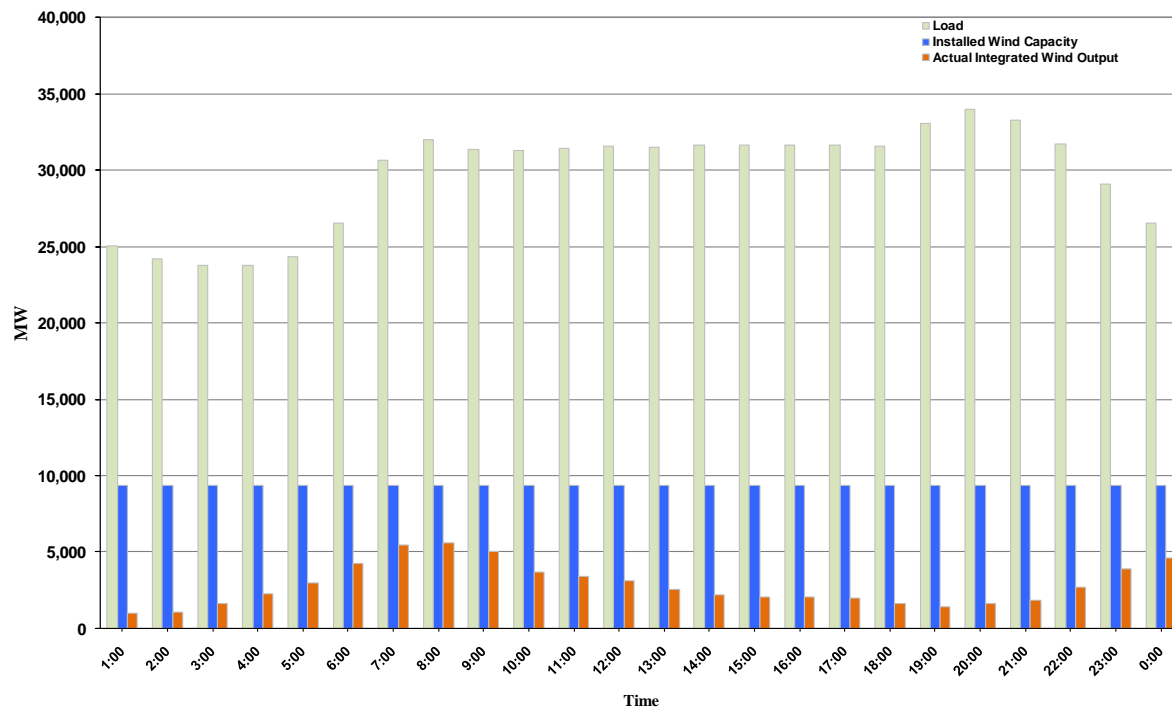




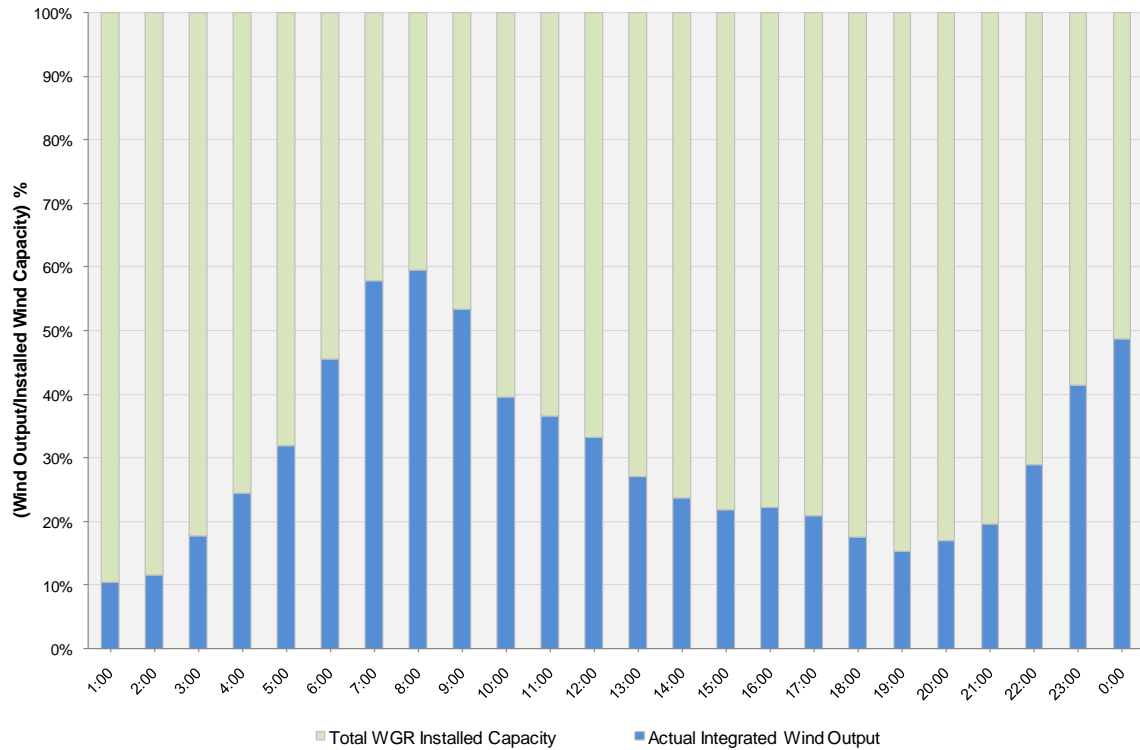
## ERCOT Grid Operations Wind Integration Report: 02/15/11

Peak Load	<b>33,945 MW</b>
Load Peak Hour	<b>20</b>
Wind Record 12/11/10	<b>7,227 MW</b>
Max Wind Value	<b>5,736 MW</b>
Wind Peak Hour	<b>07:25:32</b>
Wind Integration %	<b>17.80</b>

Hourly Average Actual Load vs. Actual Wind Output  
02-15-2011



**Actual Wind Output as a Percentage of the Total Installed Wind Capacity**  
**02-15-2011**



**Actual Wind Output as a Percentage of the ERCOT Load**  
**02-15-2011**

